

Under the Regulatory Reform (Fire Safety) Order 2005, organisations must ensure that the fire protection components within a building:

"are subject to a suitable system of maintenance and are maintained in an efficient state, in efficient working order and in good repair."

To fulfil these requirements, Checkmate have created a new product called FiredoorCheck™; fire door inspection software that incorporates more than 60 individual standardised checks to evaluate the condition of an individual door set.



FiredoorCheck™:

- Dynamically captures the essential details and condition of each door, creating a database for future ongoing inspections. Areas of non compliance are visually highlighted in a way that allows organisations to prioritise maintenance activity and expenditure, useful in times of budget constraints, whilst demonstrating an understanding of the nature and scale of the problem.
- Creates a door schedule, as required by RRO, and records the history of each door to provide information for analysis, both in terms of fire compliance and ongoing remedial cost.
- Comes with unique integral software that allows a robust and highly cost-effective maintenance plan to be developed and managed by all internal stakeholders FOR THE LIFE OF THE BUILDING so that fire compliance can be not only achieved but maintained and recorded to satisfy Fire Service Enforcement Officers, Building Control and other external bodies.
- Provides a unique reference for each door set, which, together with location plans, encourages the physical numbering of doors to assist in their identification and long-term cost-effective maintenance.

For a free, no obligation consultation and outline survey please call:

01256 811133

or email: info@firedoorcheck.com



Fire Protection
Association
MEMBER 2011



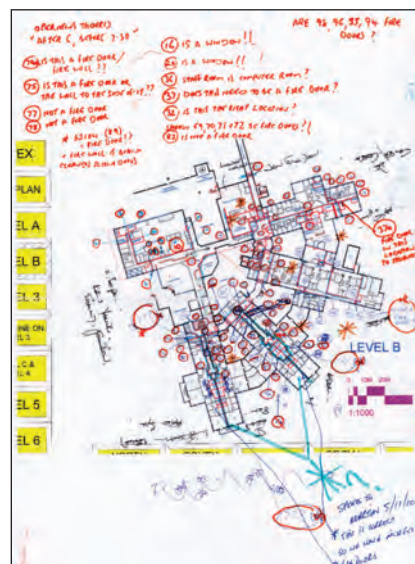
LPS 1531 Approved
Appendix 1, 2 & 3
Cert no: 860PI

FiredoorCheck™ Case Study

Using the FiredoorCheck™ Software, Checkmate Fire Solutions carried out a complete audit of the Fire Doors at St Mary's Hospital, Isle of Wight.

Fire compartmentation was holistically co-ordinated to match the overall fire strategy of the building.

As a result, large cost savings were realised, as it was found that approximately 500 fire doors were not on a fire line and did not need, year on year, assessing, auditing or maintaining in a fire compliant state.

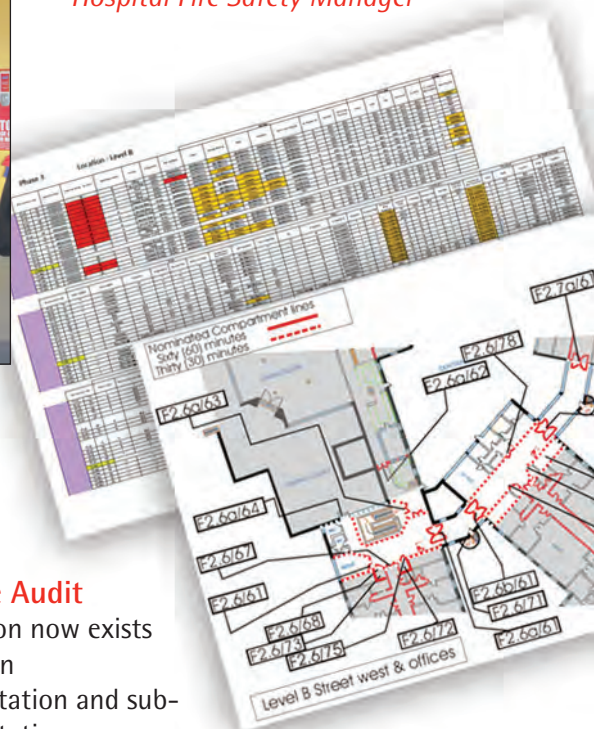


Existing drawings found to be not fit for purpose



The Island's Fire Enforcement Officer & Building Control were involved in the work as it progressed

"FiredoorCheck™ has helped us achieve both fire compliance and efficiency savings in a practical, cost-effective manner"
 Martin Keightley, St Mary's Hospital Fire Safety Manager



Before the Audit

- Existing drawings were found to be not fit for purpose.
- Doors were not numbered.
- No door schedule.
- No differentiation existed between main compartmentation (1 hour) and sub-compartmentation (1/2 hour).
- Number of fire doors and condition of fire doors and compartment walls not known.
- No system to organise and prioritise required remedial work.

Following the Audit

- Differentiation now exists between main compartmentation and sub-compartmentation.
- Approximately 500 fire doors were found not to form part of the hospital's fire compartmentation . . saving future inspection and remedial costs.
- The condition of each doorset now known, enabling remedial work to be phased and prioritised within budgetary constraints.
- The hospital now has a system for managing the fire compartmentation for the life of the building.

For a free, no obligation consultation and outline survey please call:

01256 811133 or email: info@firedoorcheck.com

www.firedoorcheck.com

